



# WEBFOOTER EXTRA

February 2013



## HAPPY VALENTINE'S DAY



### WEBFOOTERS POST CARD CLUB

PO Box 17240  
Portland OR 97217-0240



[www.thewebfooters.com](http://www.thewebfooters.com)

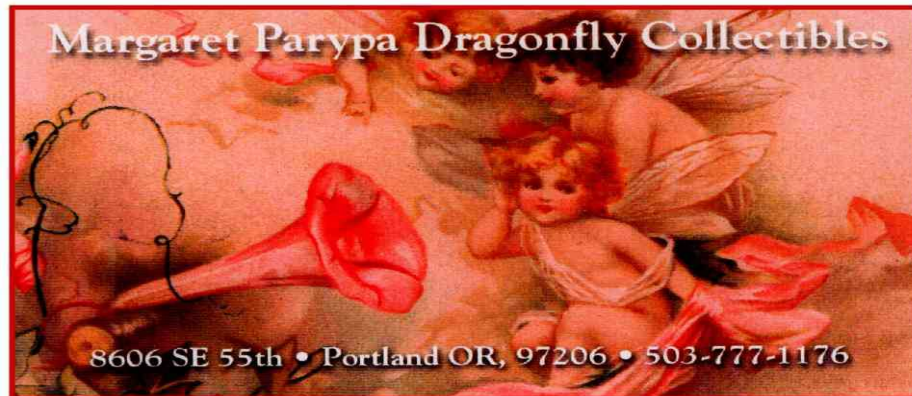


### In this issue

See the story of Oregon Dairy Farms on pg 4

Located at:

# FARMHOUSE ANTIQUES



*8028 SE 13th Avenue in Historic Sellwood 503-232-6757*

Tuesday thru Sunday: 11 to 5

(paid advertisement)

**THANKS TO OUR ADVERTISERS FOR THEIR  
SUPPORT WHICH HELPS OFFSET OUR EXPENSES**

*33RD ANNUAL*

## ANTIQUUE PAPER SHOW

APRIL 20-21, 2013 KLIEVER ARMORY - 10000 NE 33RD DRIVE - PORTLAND, OR

WEBFOOTERS POST CARD CLUB FREE ADMISSION - FREE PARKING [WWW.THEWEBFOOTERS.COM](http://WWW.THEWEBFOOTERS.COM)



**Northwest Collectibles Presents**

**The Largest Antique Paper Shows in the Northwest**

**The Greater Portland  
Postcard, Stamp & Paper  
Collectibles Show**

**The Greater Seattle  
Postcard & Paper  
Collectibles Show**

**February 16 and 17, 2013**

**February 9 and 10, 2013**

**Kliever Armory  
10000 NE 33rd Drive  
Portland, Oregon**

**Kent Commons  
525 4th Avenue N  
Kent, Washington**

**Old Postcards, Photographs, Stereo View Cards, Books,  
Stamps, Valentines, Matchbooks, Magazines, Prints,  
Maps, Trade Cards, Movie Posters & Much More!**

**Show Hours:**

Saturday: 10 am - 6 pm  
Sunday: 10 am - 4 pm  
Admission: \$5 (Good for Saturday & Sunday)

**Upcoming Shows:**

Portland Oregon  
Lloyd Center Doubletree Inn (1000 NE Multnomah St)  
June 22 and 23, 2013

Kent Washington  
at Kent Commons  
June 29 and 30, 2013

**Call or Write:**

Terry Weis  
601 NW 72nd Circle  
Vancouver, WA 98665-8462  
503-679-4755

Jeremy LeRoque  
5881 Live Oak Ln  
Redding, CA 96001-4617  
626-665-9435



**[www.postcardshows.com](http://www.postcardshows.com)**

**FREE APPRAISALS**

(paid advertisement)



# OREGON DAIRY FARMS



As Oregon began to grow in the 1900s, the Portland area's lush landscape, abundance of fertile pastureland and moderate climate became recognized as ideal conditions for raising milk cows. The rolling hillsides of Southwest Portland between Hillsdale and Beaverton were dotted with dairies largely operated by Swiss and Dutch immigrants. A number of dairies sprang up on Portland's rural east side as well. Over the years, similar stories were repeated in many communities across the country.



The Steigerwald Dairy Farm was located between N.E. Prescott and Killingsworth streets from about 42nd to 52nd near Going Street. Alvin Steigerwald operated Steigerwald Dairy Company, one of the earliest dairies in East Portland. In addition to selling milk and creamery products, the Steigerwalds also raised nursery stock. In 1928, economic conditions forced a merger with Carnation.



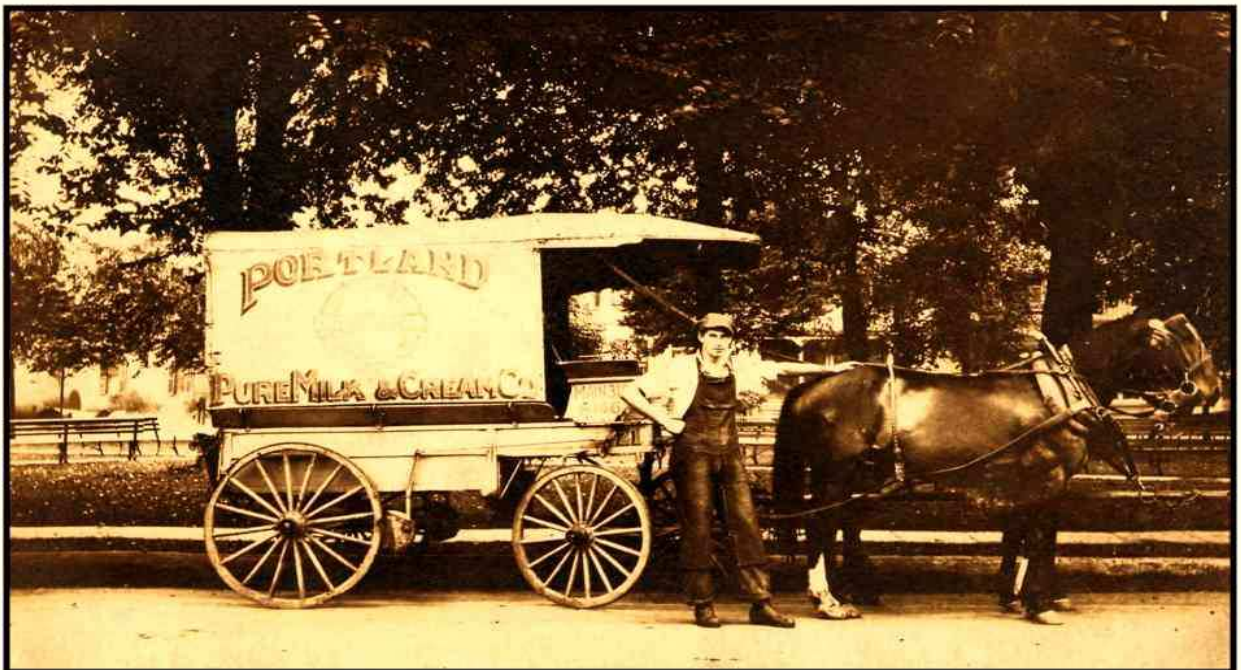
This is a postcard view of Alpenrose Dairy in 1917 when it was located near S.W. 45th and Vermont Street. It was operated by Henry and Rosalina Cadonau.

In 1891, Henry Cadonau began delivering milk in three-gallon cans by horse-drawn wagon to a restaurant in downtown Portland. A fire destroyed the dairy in 1943 and a year later, the family purchased the 52-acre Elco Dairy, on Shattuck Road which is the present site of Alpenrose.

A creamery featured in the Webfooter in Feb. 2007, the Hazelwood Cream Company, was established in Portland at Front and Ankeny streets in 1900. They manufactured and distributed the highest quality milk, butter, eggs, cheese, milk-fed poultry and ice cream. They operated four confectioneries from 1908 to 1931, including an ice cream parlor at Multnomah Falls as well as a candy kitchen in Portland.



Damascus Creamery got their start in the early 1900s in the area known as Damascus, Oregon. They grew and merged with other milk companies and creameries, moving their headquarters to Portland.



Portland Milk Company merged with Damascus about 1920.

Damascus supplied milk, ice cream and other dairy products to Portlanders for more than 50 years. The 1915 Portland phone book lists the Damascus Creamery at 432 Hawthorne and the Vetsch Brothers, who had a hand in many of Portland's milk companies, were listed as the proprietors. The Damascus Cream Store was listed at 432 Hawthorne. In 1922, they were listed as Portland Damascus Milk Company on Cornell and Brook streets in downtown Portland.

In the 1930 directory, they were listed as Damascus Creamery. In 1934 and 1941, the directories list Riverview Damascus Milk Company at 3342 S.E. Morrison St. In the 1950s, it was mostly known as Damascus Milk Company. They tried to change the name from Damascus to Carnation Milk Company, but there was a boycott of Carnation milk products and the name was changed back to Damascus. In the early 1960s, they tried again by changing the name to Damascus Carnation. Eventually, Damascus was dropped altogether.



A Damascus Milk truck driver made home deliveries in the 1930s.



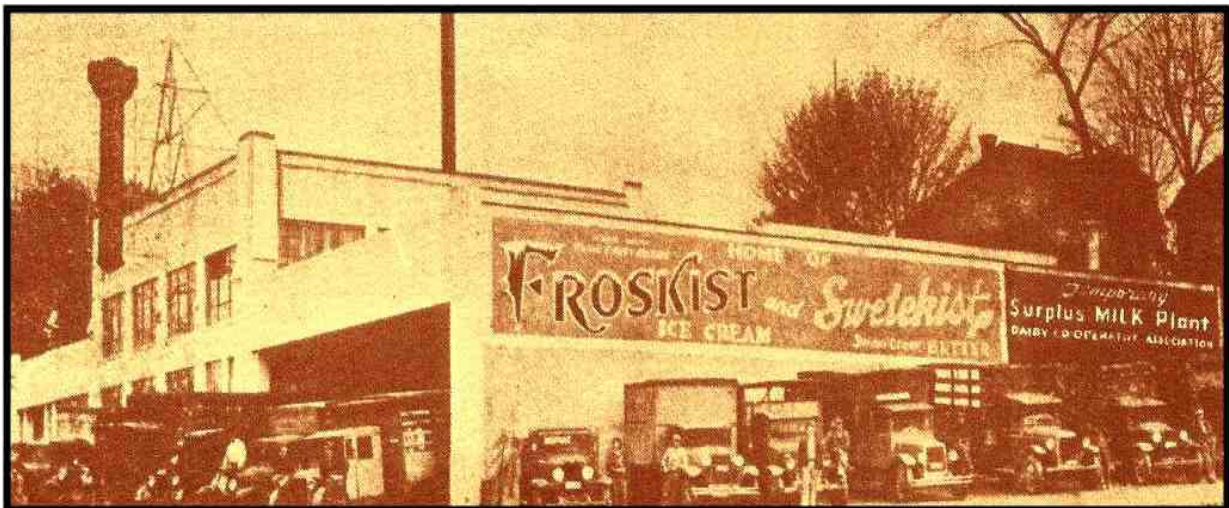
The milk man and his team with a Mayflower Dairy delivery wagon.



Mayflower Dairy, located in Vancouver, Washington, was the namesake for Mayflower Farms in Portland.

Prior to the Great Depression, in the late 1920s, Oregon dairy farmers felt an economic blow when the price of butterfat dropped from 16 cents a pound to 12 cents a pound. The old Dairymen's League collapsed as a result. After bitter fights and protests of unfair practices, milk prices fluctuated greatly.

After recognizing a need to agree on consistency in pricing and marketing, a group of dairymen came together on November 8, 1929 to sign incorporation papers for the Dairy Cooperative Association (forerunner to Mayflower Farms). The following year, more than 1,300 members signed the contract. Finally, in January of 1931, Will Henry was hired as the first manager and the headquarters of the newly formed Dairy Cooperative Association were established at Third and East Madison Streets.



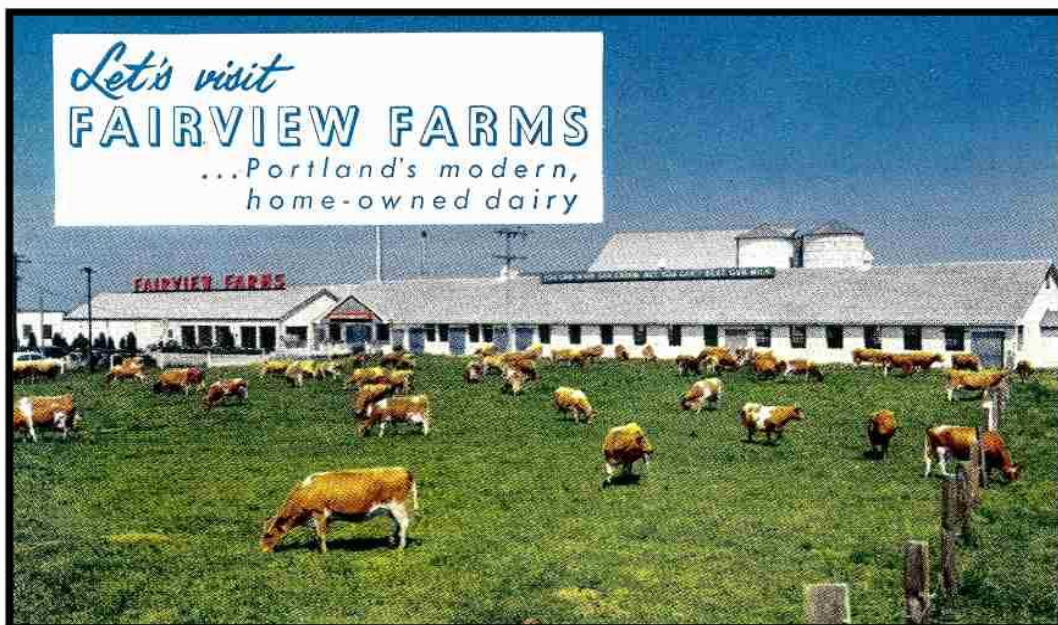
The old Frostkist Ice Cream Company building on 11th and East Belmont streets was selected as the first distribution plant and they began accepting milk from local producers on August 31, 1931. Milk skimming and production began there on October 1 that year. When the Dairy Co-op bought Medo-Sweet Dairy, they got a license to sell Mayflower Milk in Portland. In 1950, milk packaging changed from glass to paper milk cartons and the Dairy Co-op began closing its smaller bottling plants.



The new Mayflower Milk manufacturing plant on S.E. 6th Avenue opened in 1960. Two years later, the 33-year old Dairy Cooperative Association changed its name to “Mayflower Farms” and all products were branded as “Mayflower.” They continued to make ice cream, butter and cheese that was packaged for Darigold and others such as Western Family’s “Shur-Flavor” brand.

Several mergers occurred in 1967 and Mayflower Farms now included 318 dairymen who produced 40 million gallons of milk a year. Milk producers ranged in location from Etna, California in the south to Yakima and Olympia, Washington to the north, Baker, Oregon to the east and the coastal communities in the west. In the 1980s, Mayflower Farms joined the Northwest Dairy Association and began operating as a branch of Darigold which is headquartered in Seattle.

The company known as Darigold today was started after the merger of five Puget Sound Dairy Co-ops into the United Dairymen’s Association in 1918. At an employee picnic in 1925, United Dairymen’s Association members had a contest to name the milk, cheese and butter they produced. The winner was “Darigold.”



Fairview Farms, the home of “Golden Guernsey Milk” operated on Portland’s eastside for over 50 years. In the 1970s, Fairview Farms joined Mayflower Farms dairy cooperative and the Fairview Farms brand disappeared. Consolidation continues and only a handful of local milk companies remain today.